



You **Can't** call an  
**Elephant**  
in an  
**EMERGENCY**

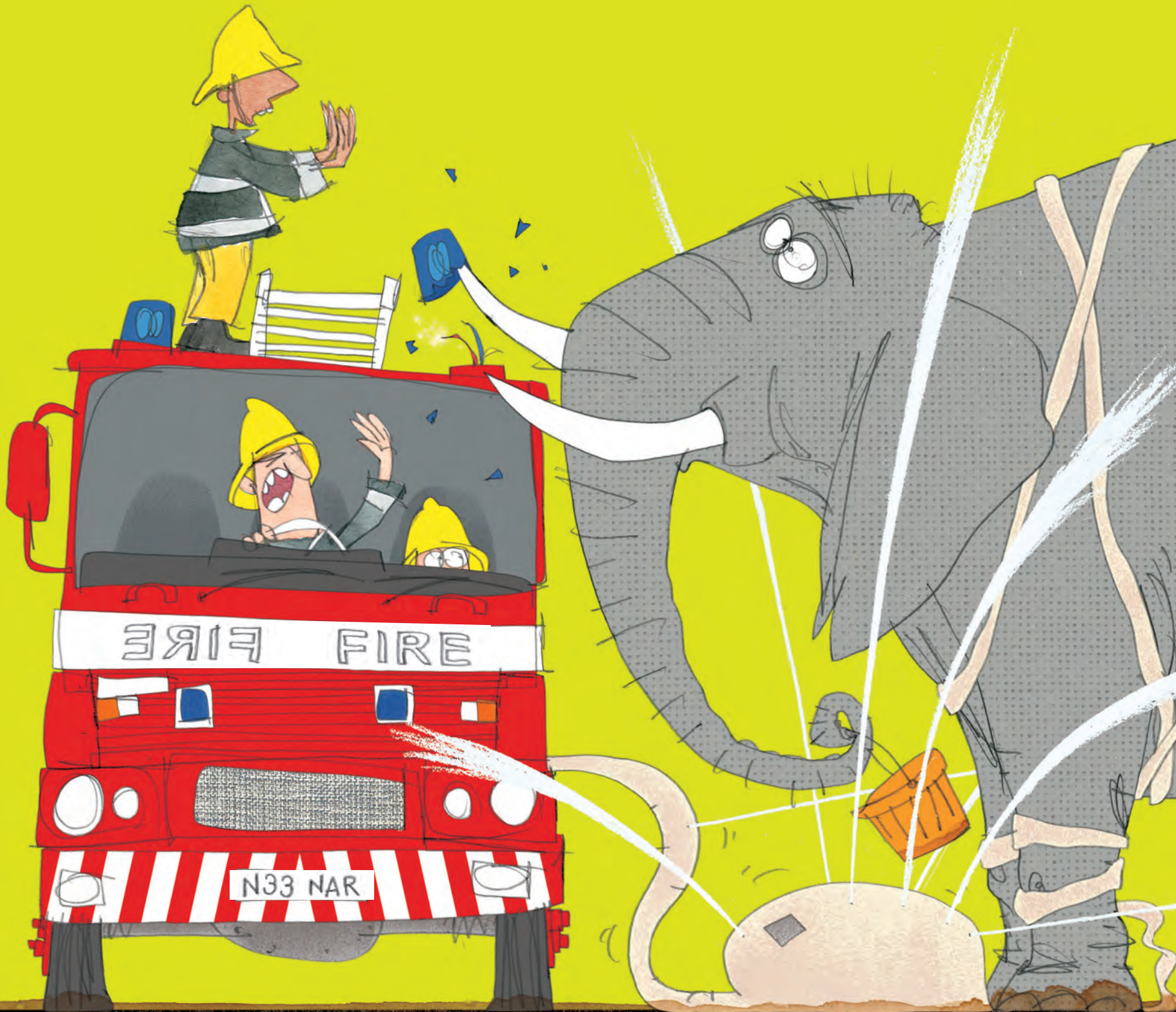
Patricia Cleveland-Peck  
Illustrated by David Tazzyman

BLOOMSBURY  
CHILDREN'S BOOKS

LONDON OXFORD NEW YORK NEW DELHI SYDNEY



You can't call an **elephant** in an emergency . . .



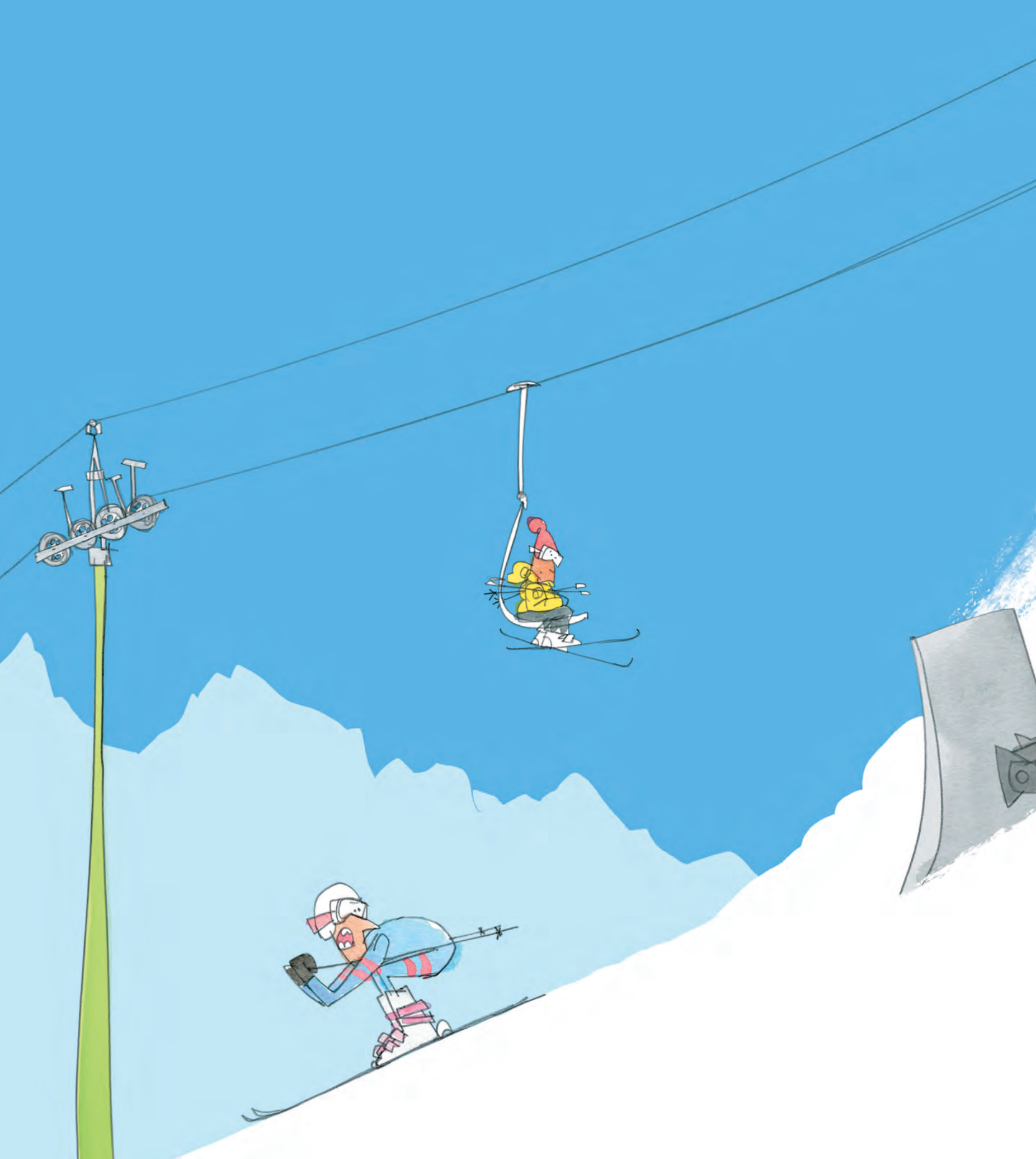


He'll blunder around and trumpet with glee.

Then tangle the hoses and cause a flood

and laugh as the fire crew slips in the mud!









Don't let a hairy **highland cow**

operate the new **snow plough . . .**

She can't find the brake, keeps grinding the gears.

No, *this* alpine adventure could end in tears.



Oh, what a  
catastrophe...





The paramedic's a chimpanzee.

Instead of tending your bruises and cuts,  
she sits in the ambulance eating nuts!

